

Fresh Tagplus Configuration Operation

1. Install the software first. And then open that software as following interface:



2. Pull down "Operator name"



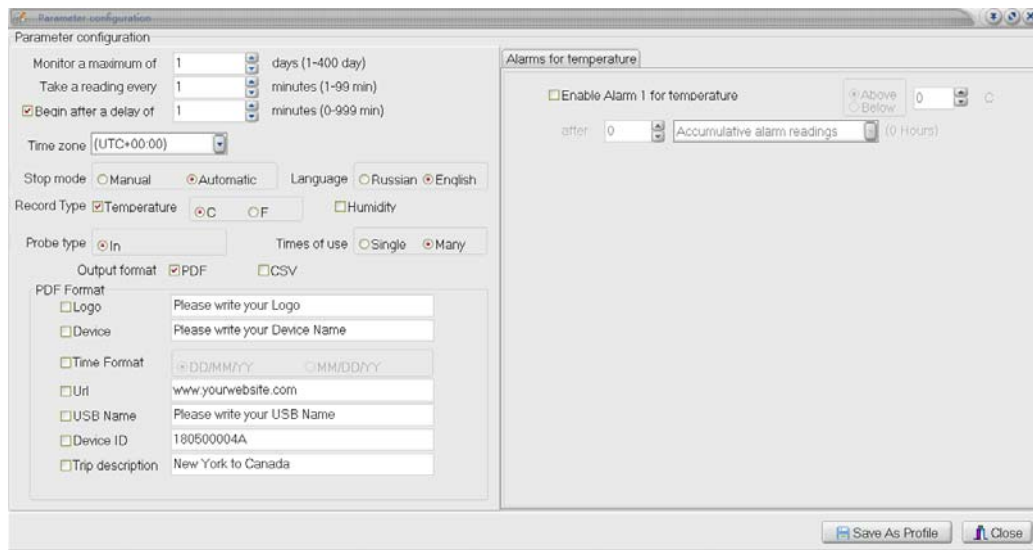
3. Click the person icon to enter the following interface:



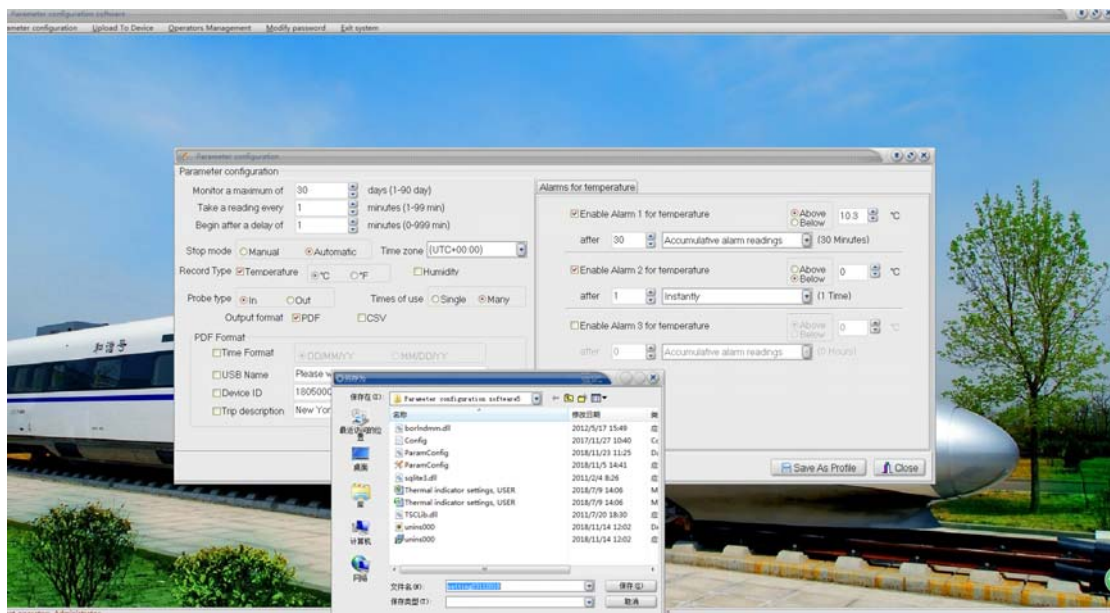
4. Click "Parameter configuration". On this interface, please configure what you want, such as

recording days, interval time, start delay, time zone, lorry number etc.

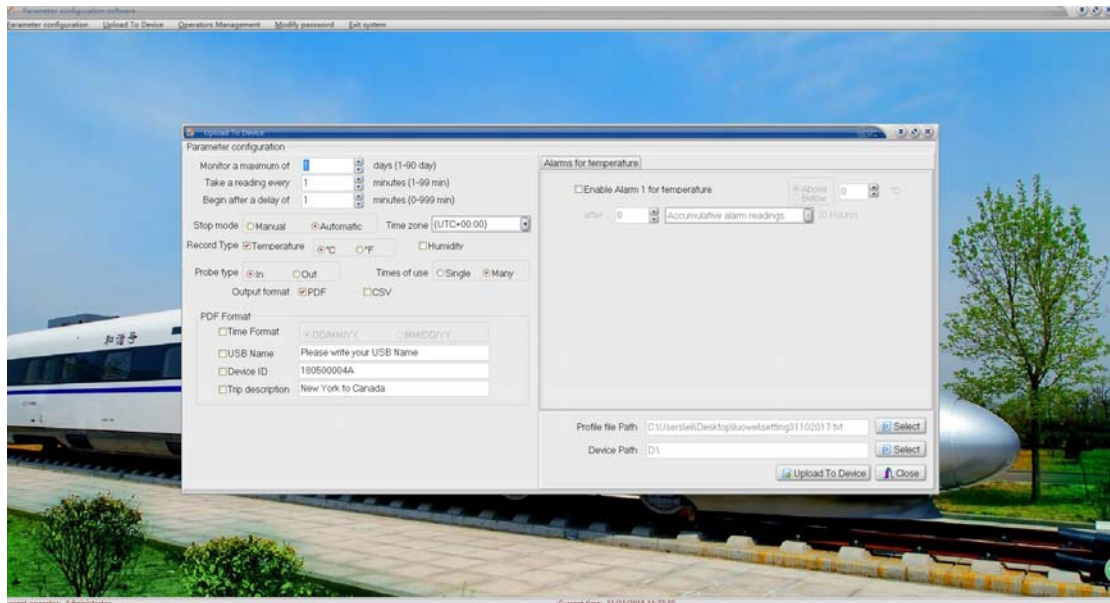
Note: Stop mode, language, Humidity, Device ID couldn't be configured.



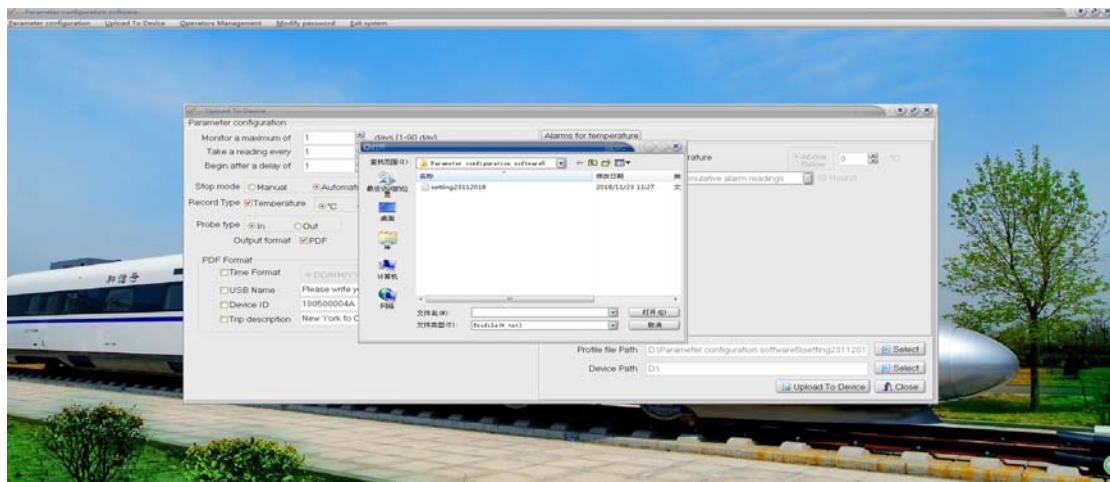
5. Click “Save AS profile” to enter the following interface. Then click Save on the dialog box to save the file until it displays Save succeeded. Close this dialog box.



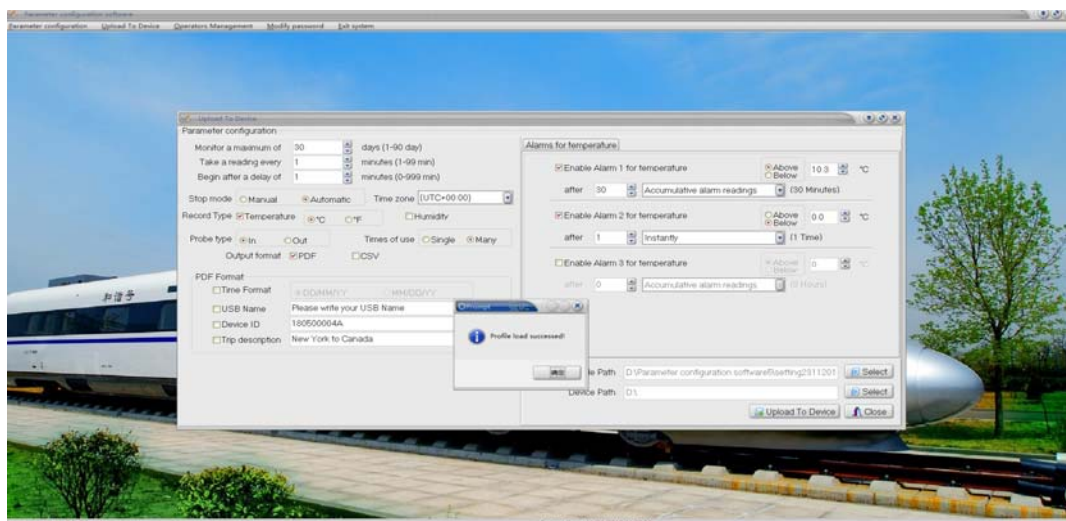
6. Click “Upload To Device” to enter the following interface:



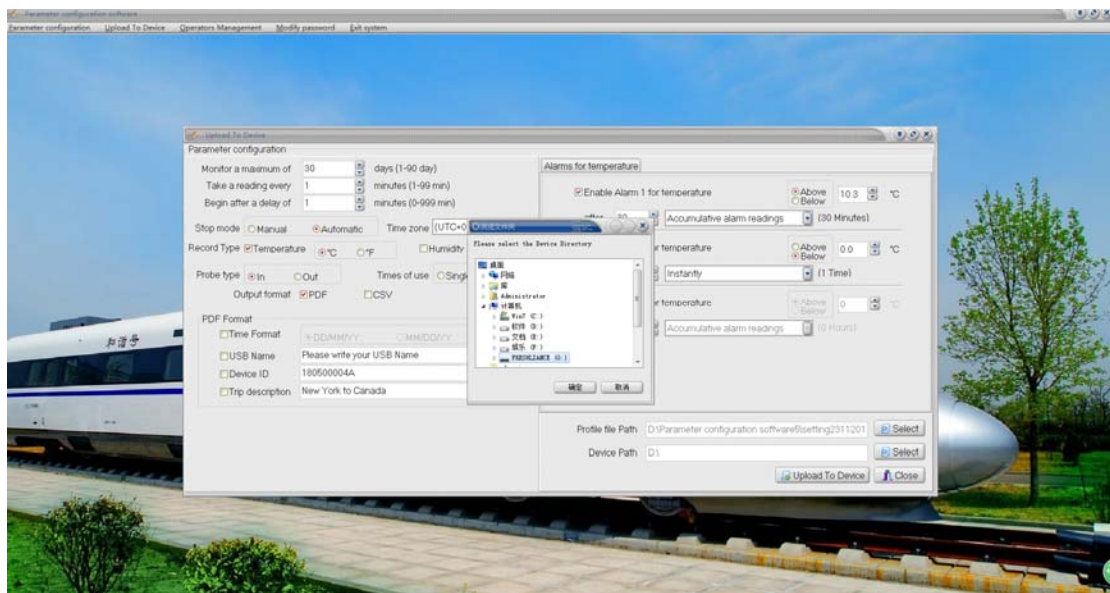
7. Click “Profile file path select” on the dialog box and then select the configuration file as follows:



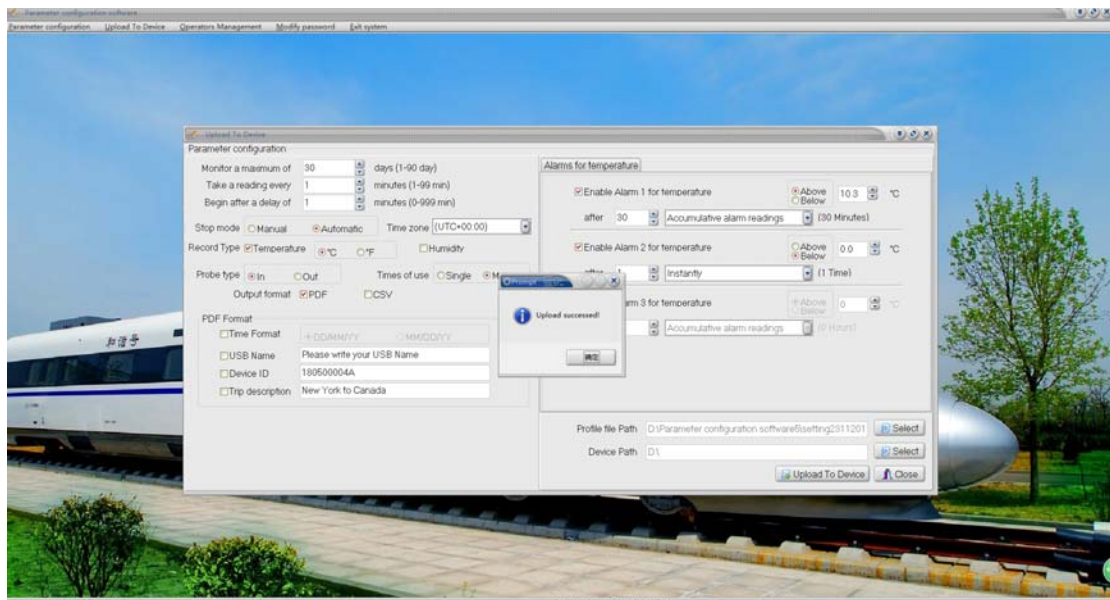
8. Click “Open” on the second dialog box. Then it will display “Profile load succeeded” as follows:



9. Insert the logger to the PC(The logger will display 8888) and click “device path select” to find the logger as follows:



Press “Upload To Device” to upload the configuration to the logger. It will display Upload succeeded as follows:



Note: Pull out the logger, the 8888 is still there. Please don't do anything until 8888 disappears.

10. Turn on the logger. The logger will work.